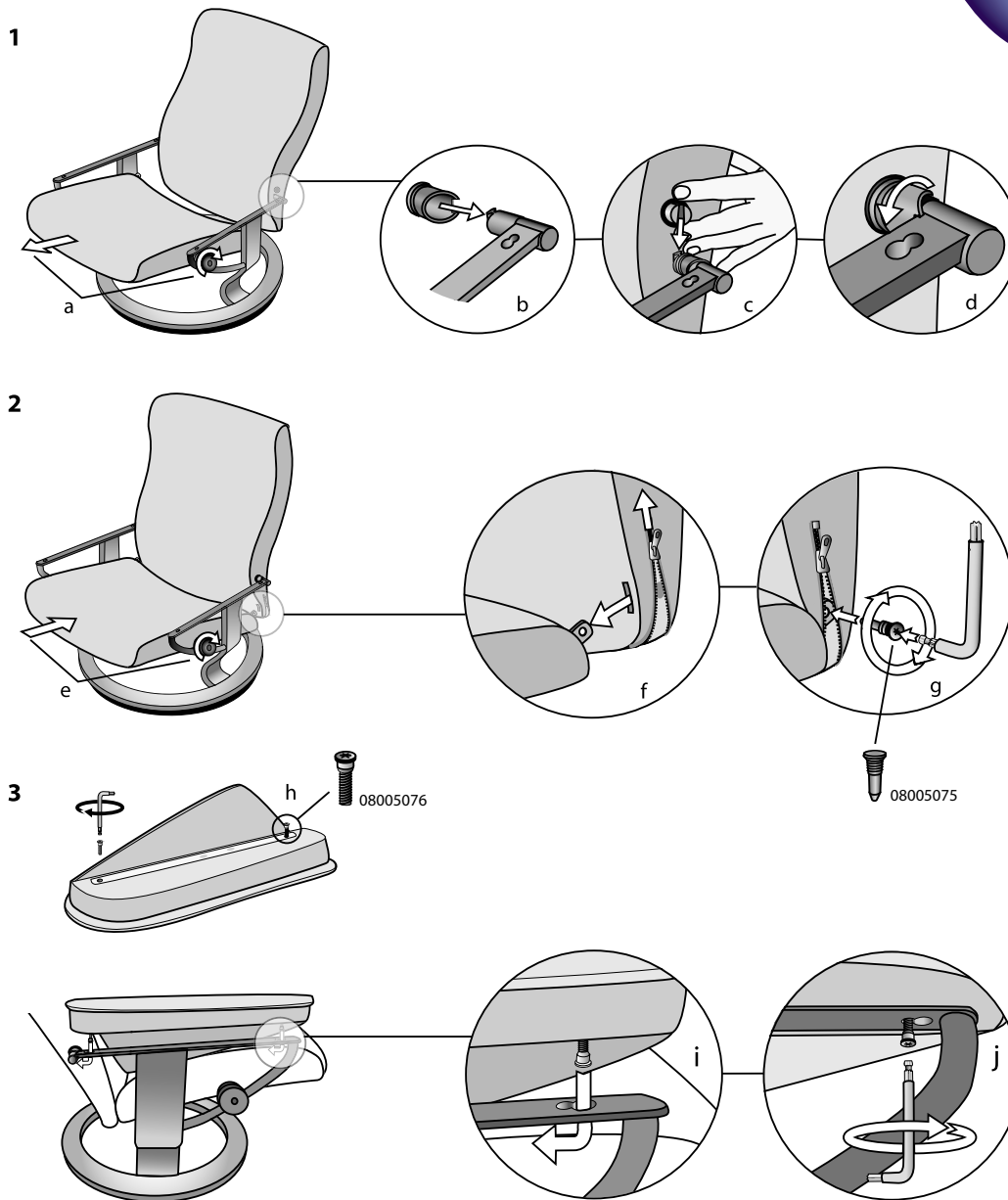


Assembly Stressless® recliner



1. Attaching the backrest to the seat arm assembly

- a Push the seat as far forward as possible and screw the handle on the glide mechanism tight so that the seat is fixed in position.
- b Thread the enclosed plastic locking rings onto the pins at the ends of the seat arm assemblies. Make sure that the longest part of the ring points backwards towards the seat arm.
- c Squeeze the backrest cushion away from the backrest coupling so that the coupling bolts are exposed. Guide the coupling bolts on the backrest over the pins on the seat arm assembly and press home. NB! Make sure the backrest covering is not damaged by the steel parts.
- d Rotate the locking ring so that the longest part of the ring faces forward and the notch on the ring grips the seat arm assembly.

2. Attaching the backrest to the seat

- e Loosen the handle on the glide mechanism and push the seat as far back as possible. Screw the handle tight again.
- f Open the zip at the bottom of the backrest cover so that the seat and backrest can be joined together. Guide the fittings at the rear of the seat through the hole in the backrest covering.
- g Tighten the screws firmly. Close the zip in the backrest covering.

3. Attaching the seat arms

- The seat arms come in left and right-hand versions. When attached, the seat arms should turn outward from the chair.
- h Insert the enclosed multidrive screws into the holes underneath the seat arms and fix by turning two or three times.
- i Insert the screws into the spanner slots on the seat arm assembly, and shove the seat arm back towards the backrest so that the screws slide into the narrow end of the spanner slots.
- j Screw tight.